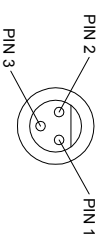


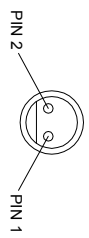
VIEW A



3 PIN MALE MATING FACE

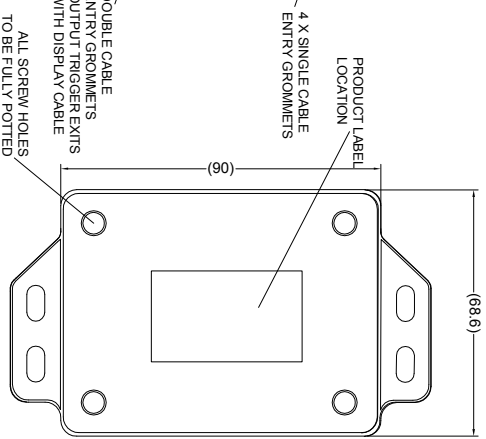
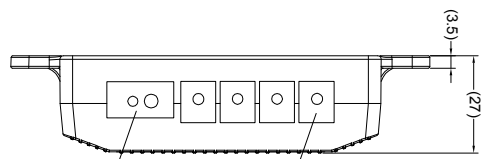
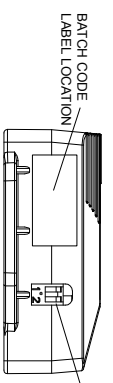
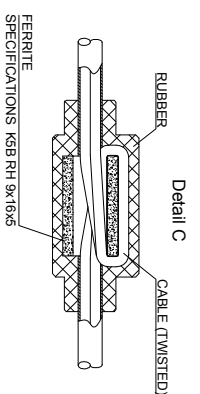
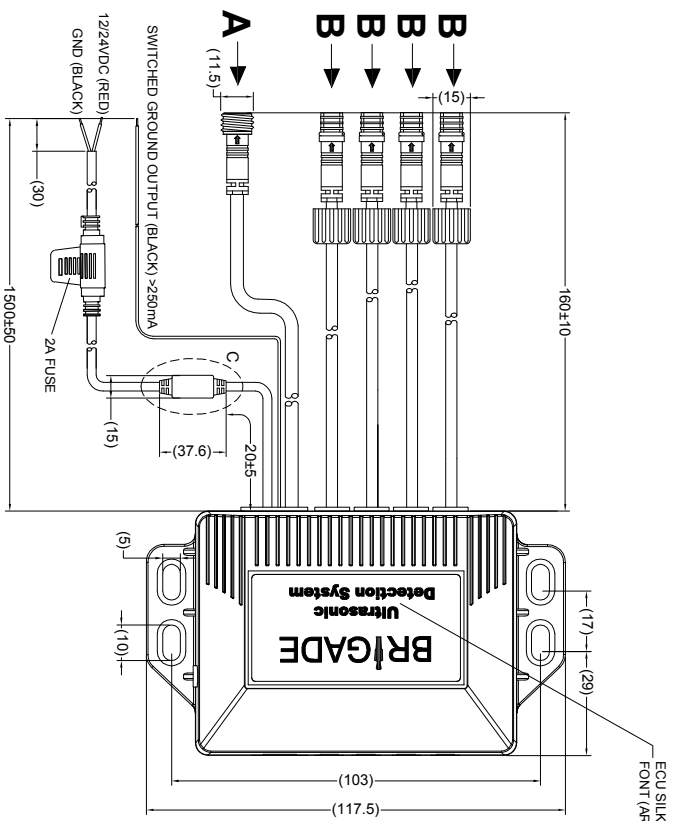
PIN #	WIRE COLOUR	DESCRIPTION
1	BLACK	GND
2	RED	BUZZER POWER
3	WHITE	BUZZER SIGNAL

VIEW B

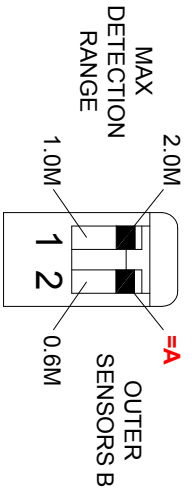


2 PIN FEMALE MATING FACE

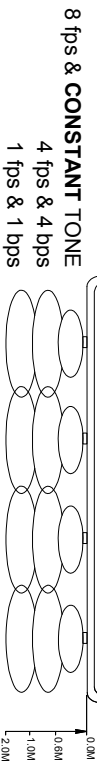
PIN #	WIRE COLOUR	DESCRIPTION
1	BLACK	GND
2	RED	SENSOR SIGNAL



DIP SWITCH CONFIGURATION



FRONT OF VEHICLE



- NOTES:**
1. WHEN THE SYSTEM IS POWERED BUT NOT DETECTING THE LED WILL REMAIN GREEN.(NO START UP BEEP)
 2. ALL AUDIBLE WARNINGS ARE MEASURED IN BEEPS PER SECOND. (pps)
 3. ALL VISUAL WARNINGS ARE RED AND ARE MEASURED IN FLASHES PER SECOND (fps).
 4. ON START-UP THE SYSTEM WILL BEEP ONCE FOR ONE FAULTY SENSOR, TWICE FOR TWO FAULTY SENSORS ETC.
 5. THE ECU IS FULLY POTTED.
 6. GROUND OUTPUT ON BLACK WIRE OPERATES DURING DETECTION.(MAXIMUM CURRENT 250ma)
 7. PCB REVISION LEVEL: PCB-10015-00.
 8. SOFTWARE VERSION: DIC-10015-30-2



PROPRIETARY NOTICE
THIS DESIGN AND TECHNICAL INFORMATION APPEARING ON THIS DRAWING IS THE PROPERTY OF BRIGADE ELECTRONICS AND IS DISCLOSED IN CONFIDENCE. IT IS NOT TO BE COPIED, REPRODUCED, REVEALED TO OR EXPLOITED BY OTHERS, EITHER IN WHOLE OR IN PART WITHOUT THE EXPRESS WRITTEN CONSENT OF BRIGADE ELECTRONICS.

Revision Notes			
R1 - UPDATED SOFTWARE REFERENCE ECR - CR-A322	Drawn:MP	Checked:RB	Approved:BC
APPA-LEE-06181214			Date: 10/12/14

BRIGADE
www.brigade-electronics.com

Third Angle	
Angle of Projection	Third Angle
Assembly PI Approval	Approved by SMA TT/HEMS
Units	Scale
mm	N/A
Status	Released
RELEASED	06.07.2012
Assembly Ref	FS-4000W-ECU
Part No	BE-001943-01-12

Checked by		Drawn by	
JNEWMAN	M.POTTER	JNEWMAN	M.POTTER
Released		Released	
06.07.2012		06.07.2012	
Assembly Ref		Assembly Ref	
CEC-10015-30		CEC-10015-30	